

SPECIFICATION BASIL SHIRASU SARDINE

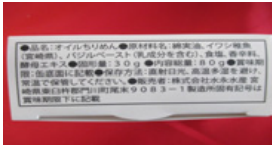
Private Brand
Mizunaga Co Brand

Products Na		Oil Sardine (Basil and Oil)		Spec	Set	Net Weight 30g * Product Weight 80g	
JAN Code		4.9532E+12		Set	Individual		
Name	Mizunaga Co., Kivaki	Address	Miyazaki Prefecture Higashi Usuki Gun Kadogawa Cho Omatsu 9083-1 0992-83-1032				
Rep		TEL					
Manufacture Name	Marumitsu Sanyo Co.,	Factory Address	Fukuoka Prefecture Yame Tachibana Cho Kanematsu 1834				
Factory Manager		TEL	0943-37-1131				
Storing Temp	Dry and Cool Place		Prodycs Spec	W*L*H-Weight			
Shelf Life	3 Years From Production Date		Products Size	80mm X 78mm X 36mm			
Dry			Out Side Box	1.37inch X 3.14inch X 3.14inch			
Package			Package	32.7cm X 34.1cm X 7.7cm			
●Menu			MSRP				
商品特徴・商品コンセプト			9.99 USD				
After the fresh sardine caught in Miyazaki Port we boil it immediately to keep the freshness and dry slowly with 5 layers shelf dry conveyor.			Usage				
After the dry process, put in the fridge and store it in certain temperature for over night to enhance the Umami flavor within the fish.			<ul style="list-style-type: none"> • Pasta and Pizza Topping • Side Dishes with Wine • Dressing with Salad 				
After all the prep process, we soak the dried sardine in Basil, oil and pepper. Enjoy the taste of national awarded premium sardine.							

[Ingredients]

Ingredients

Cotton Seed Oil, Sardine, Basil Paste(Basil, Cotton Seed Oil, Parmesian Cheese, Salt, Garlic, Water), Salt, Spices(Garlic, Pepper, Dextrin, Tapioca), Yeast Extract(Beer Yeast Extract)



Nutrition Facts		
5 servings per container		
Serving size 1 Tablespoon (16g)		
Calories	100	510
	per serving	per container
Total Fat	15g	13%
Saturated Fat	2.5g	12%
Trans Fat	0g	0%
Cholesterol	0mg	0%
Sodium	100mg	20%
Total Carb.	1g	0%
Dietary Fiber	0g	0%
Total Sugars	0g	0%
Incl. Added Sugars	0g	0%
Protein	1g	2%
Vitamin D	0mcg	0%
Calcium	21mg	0%
Iron	0mg	0%
Potassium	23mg	0%

*% Daily Value (DV) are based on a diet of other people's secrets.

INGREDIENTS: Anchovy with Basil/Cottonseed Oil
CONTAINS: Fish

Ingredients	COO	Additives	Allergy	GMO	Ratio (%)	Allergen
Cotton Seed Oil		Okamura Seiyu Co.		Unclear	62.31	Wheat
Sardine	Miyazaki	Mizunaga Suisan Co.,'		Exceptional	35.58	Milk
Basil Paste	USA	Higa Industries Co.,			1.06	Egg
Basil	USA			Unclear		BuckWheat
Cotton Seed Oil	USA, Canada			Unclear		Peanut
Parmesian Cheese	USA, German		Milk			Shrimp
Salt	USA			Exceptional		Crab
Garlic	USA,China			Unclear		Abalone
Water	USA			Exceptional		Squid
Seasoning		Nishinoh Foods Co.,			0.88	Salmon Raw
Salt						Orange
Sea Salt	Mexico			Exceptional		Kiwi
Spices	India/ China/US					Beef
Garlic	Indonesia/Malaysia			Unclear		Walnut
Pepper				Unclear		Salmon
Dextrin						Mackrel
Tapioca	Thai			Unclear		Soy
Yeast Extract						Chicken
Beer Yeast Extract	Japan		Rice	Unclear		Pork
Black Pepper		Kaneka san Spices Co.,			0.17	Matsutake Mashroom
Spices Black Pepper	Malaysia,Vietnam,India			Unclear		Peach
					100.00	Japanese Sticky Yam

Production Procedure
 Ingredients (Dried anchovi--Filtering and sorting--Flavoring with broth, black pepper, basil
 --fermentation --Filling small cans Metal Detector (F e : 2.5/S u s : 4.0)
 --Dried Anchovi packaging and scaling (40g)--Cottonseed Oil filling --Final Check (Daken: 2 weeks after)--Distribution
 Metal Detector YesAuto Checker Yes